



## **Director's Situation Update Tuesday**

**12 May 2009 1100 EDT  
Day 24**

**The Day of Sustaining the Workforce**



# Novel Influenza A (H1N1) Key Events

## 12 May 2009 1100 EDT



- **Novel Influenza A (H1N1) Declarations**
  - **HHS: Downgraded to Phase 1 – Awareness (9 May 2009)**
  - **WHO: Pandemic Phase 5 (29 Apr 1600 EDT)**
  - **Declarations of Emergency (no changes)**
    - **USG: Public Health Emergency declared (26 Apr 2009)**
    - **SLTT Declarations: 10**
      - CA, TX, WI, FL, NE, VA, MD, IA, OH, American Samoa
    - **National Declarations: 4**
      - Ecuador, Costa Rica, Colombia, Mexico
- **US Cases:**
  - **Confirmed: 3,009 cases (♣ 391)**
    - **3,002 cases, 44 States; 7 cases DC**
  - **Probable: 643 cases**
    - **640 cases, 35 States; 3 cases DC**
  - **Confirmed/Probable: 3,652 cases (♣ 330)**
    - **3,642 cases, 46 States; 10 cases DC**
  - **Total Deaths 3: (2-TX, 1-WA )**
- **International Cases: 5,251 in 30 Countries**
  - **New countries with confirmed cases: None**
  - **Deployments: 112 deployed, 13 pending**



# Epidemiology/Surveillance Team

## Novel Influenza A (H1N1) Cases as of 12 May 2009 1100 EDT



	Confirmed (CDC Lab)											
	Cases				Hosp				Deaths			
	# State Cases	# States	# DC Cases	TTL States+ DC	# State Cases	# States	# DC Cases	TTL States+ DC	# State Cases	# States	# DC Cases	TTL States+ DC
<b>12-May</b>	<b>3,002</b>	<b>44</b>	<b>7</b>	<b>3,009</b>	<b>102</b>	<b>22</b>	<b>1</b>	<b>103</b>	<b>3</b>	<b>2</b>	<b>0</b>	<b>3</b>
<b>Change</b>	<b>388</b>	<b>1</b>	<b>3</b>	<b>391</b>	<b>9</b>	<b>1</b>	<b>0</b>	<b>9</b>	<b>0</b>	<b>0</b>	<b>0</b>	<b>0</b>

	Total Confirmed and Probable											
	Cases				Hosp				Deaths			
	# State Cases	# States	# DC Cases	TTL States+ DC	# State Cases	# States	# DC Cases	TTL States+ DC	# State Cases	# States	# DC Cases	TTL States+ DC
<b>12-May</b>	<b>3,642</b>	<b>46</b>	<b>10</b>	<b>3,652</b>	<b>115</b>	<b>24</b>	<b>1</b>	<b>116</b>	<b>3</b>	<b>2</b>	<b>0</b>	<b>3</b>
<b>Change</b>	<b>330</b>	<b>0</b>	<b>0</b>	<b>330</b>	<b>6</b>	<b>0</b>	<b>0</b>	<b>6</b>	<b>0</b>	<b>0</b>	<b>0</b>	<b>0</b>

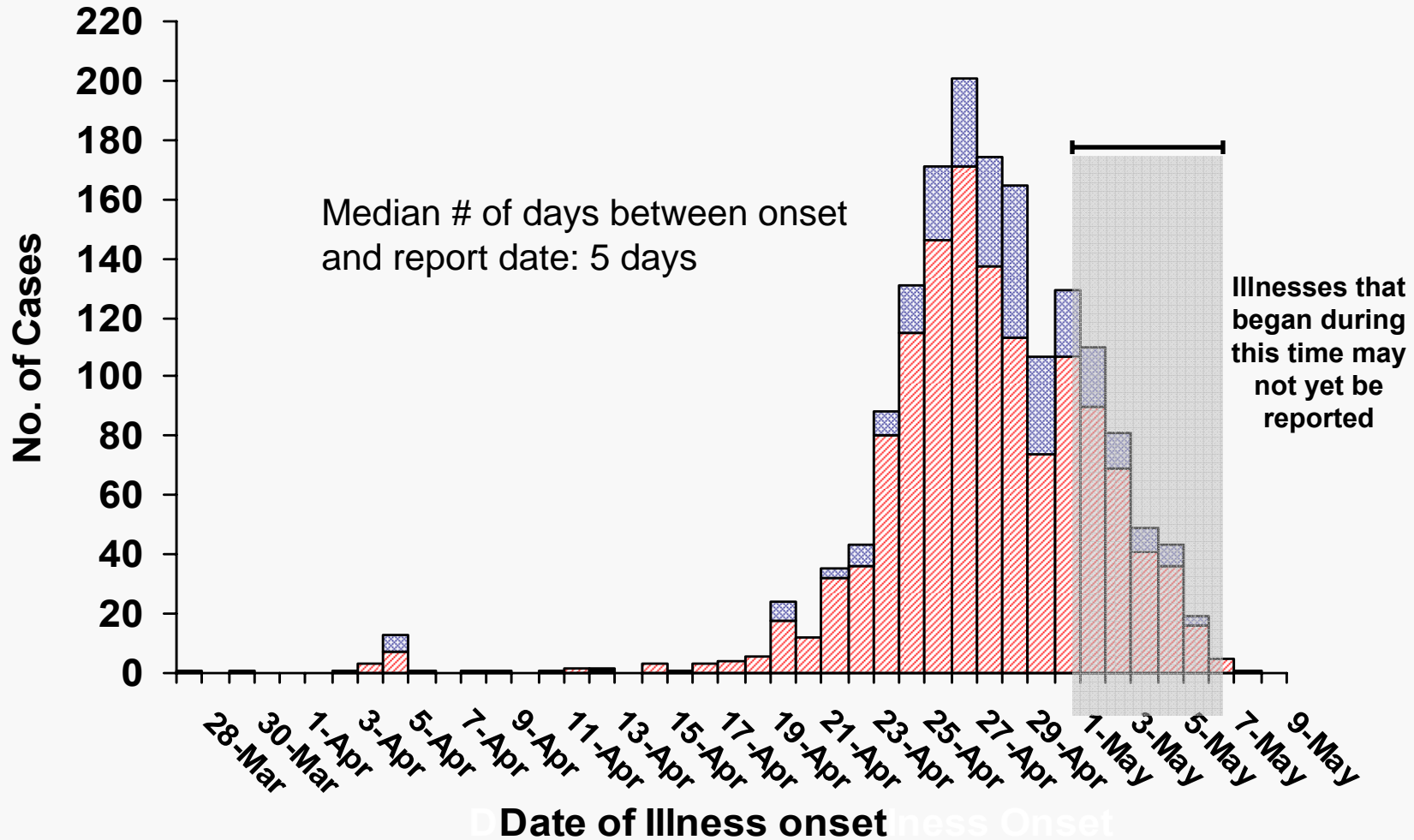


# Epidemiology/Surveillance

Confirmed, Probable Cases by Onset Date (n=1,632) as of 12 May 2009 1100 EDT



Confirmed (n=1,335) Probable (n=297)



-Internal Use Only (FIUO)---For Official Use Only (FOUO) -

**NOT FOR FURTHER DISTRIBUTION** -Sensitive But Unclassified (SBU) - Novel Influenza A (H1N1) - **NOT FOR FURTHER DISTRIBUTION**



Epidemiology/Surveillance  
as of 12 May 2009 1100 EDT



Confirmed and Probable Novel H1N1 Cases from Web-application Reporting  
(Convenience Sample of Reported Cases) N=451

- 49% male, 49% female
- 6% hospitalized
- Median age: 15 years

Age Groups	%
0-4 years	13%
5-18 years	47%
19-29 years	22%
30-49 years	11%
≥50 years	7%



Confirmed and Probable Novel H1N1 Cases from Web-application Reporting  
(Convenience Sample of Reported Cases) N=451 12 May 2009 1100 EDT



<b>Exposure</b>	<b>%</b>	<b>Symptom</b>	<b>%</b>
Traveled to Mexico	12%	Fever/feverishness	95%
Family member with pneumonia or ILI	25%	Cough	90%
Close contact with susp./prob./conf. case	12%	Sore throat	64%
Work in a healthcare setting	5%	Runny nose	49%
Handled samples in lab setting	<1%	Vomiting	24%
		Diarrhea	18%
		Shortness of breath	19%

- Time from onset date to first influenza test: median 2 days
- Received 08-09 influenza vaccine: 28%



## Epidemiology/Surveillance Assessment & Plan as of 12 May 2009 1100 EDT



- **Assessment:**
  - Pace of increase in counts appeared to have slowed; cannot rule out impact of decreased testing
- **Plan:**
  - Continuing to review general epi trends
  - Expect data from other special studies over next 1-2 weeks
  - States to begin aggregate reporting midweek; web-based application for data entry under development



Epidemiology/Surveillance  
Current Influenza Surveillance -as of 12 May 2009 1100 EDT



- **WHO/NREVSS Collaborating Laboratories (*graph as of 5/11/2009*)**
  - Seasonal influenza A (H1), A (H3), and B viruses co-circulated with novel influenza A (H1N1) viruses
  - Relative proportion of influenza A (H3N2) virus reports increasing
- **Influenza-associated Pediatric Deaths**
  - No new influenza-associated pediatric deaths reported
  - 2008-09 season total = 59
- **122 Cities Mortality Reporting System (*graph as of 5/11/2009*)**
  - As weekly mortality reports continue to be received at CDC for week ending 5/9/2009, the percentage of pneumonia and influenza deaths is not expected to be significantly elevated
  - Percentage of deaths due to pneumonia and influenza remain stable based upon daily mortality reports from the 122 Cities Mortality Reporting System
- **ILINet (*graphs by region, EARS analysis as of 5/11/2009*)**
  - During week ending 5/9/2009, the percentage of ILI outpatient visits was above the national baseline



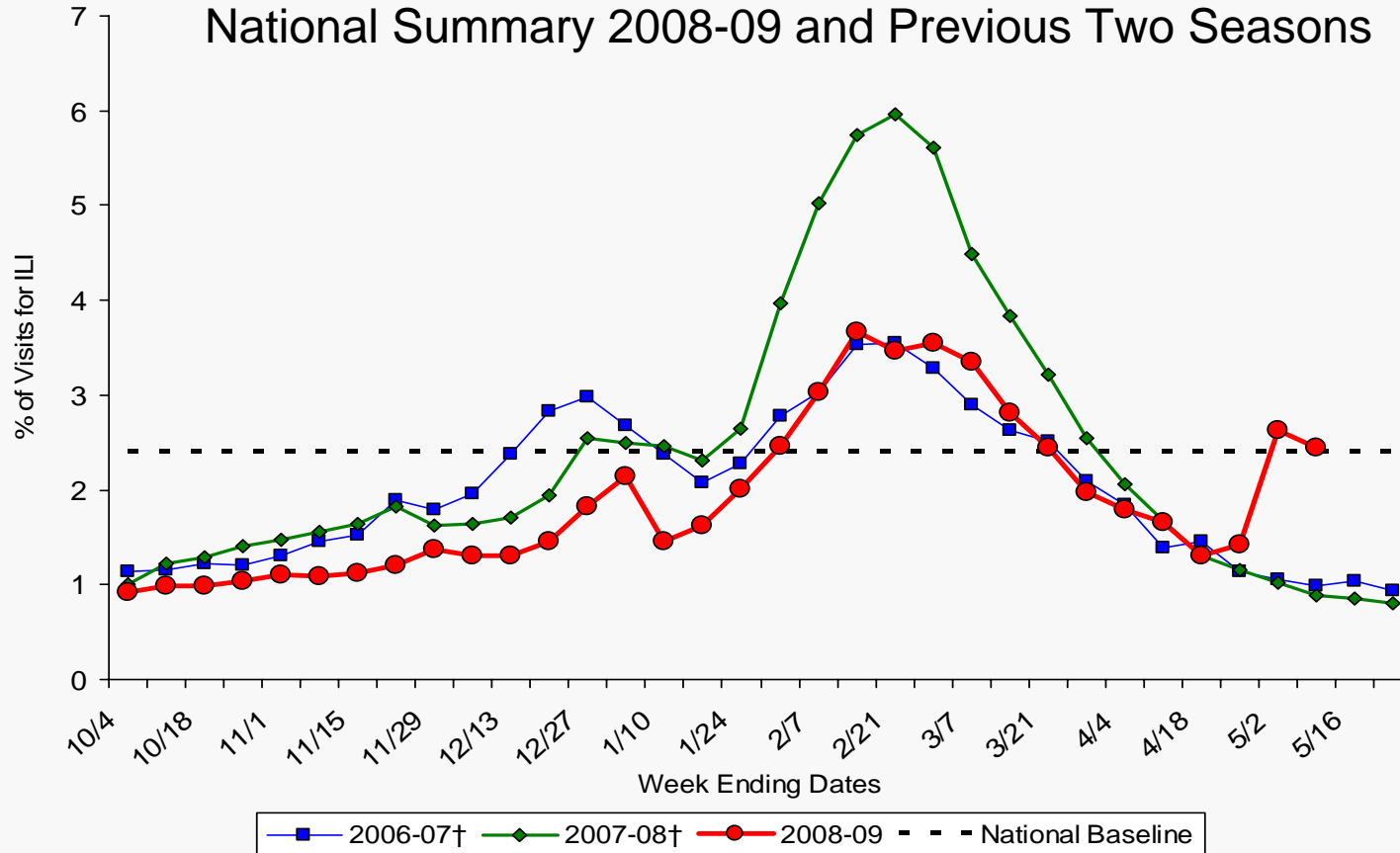


# Epidemiology/Surveillance

## Current Influenza Surveillance – ILINet 12 May 2009



Percentage of Visits for Influenza-like Illness (ILI) Reported by the US Outpatient Influenza-like Illness Surveillance Network (ILINet), National Summary 2008-09 and Previous Two Seasons



**NOTE: Week ending dates vary by influenza season**

\*Preliminary ILI data for week 18, as of May 11, 2009 (n=565 weekly ILI reports received from XX states)

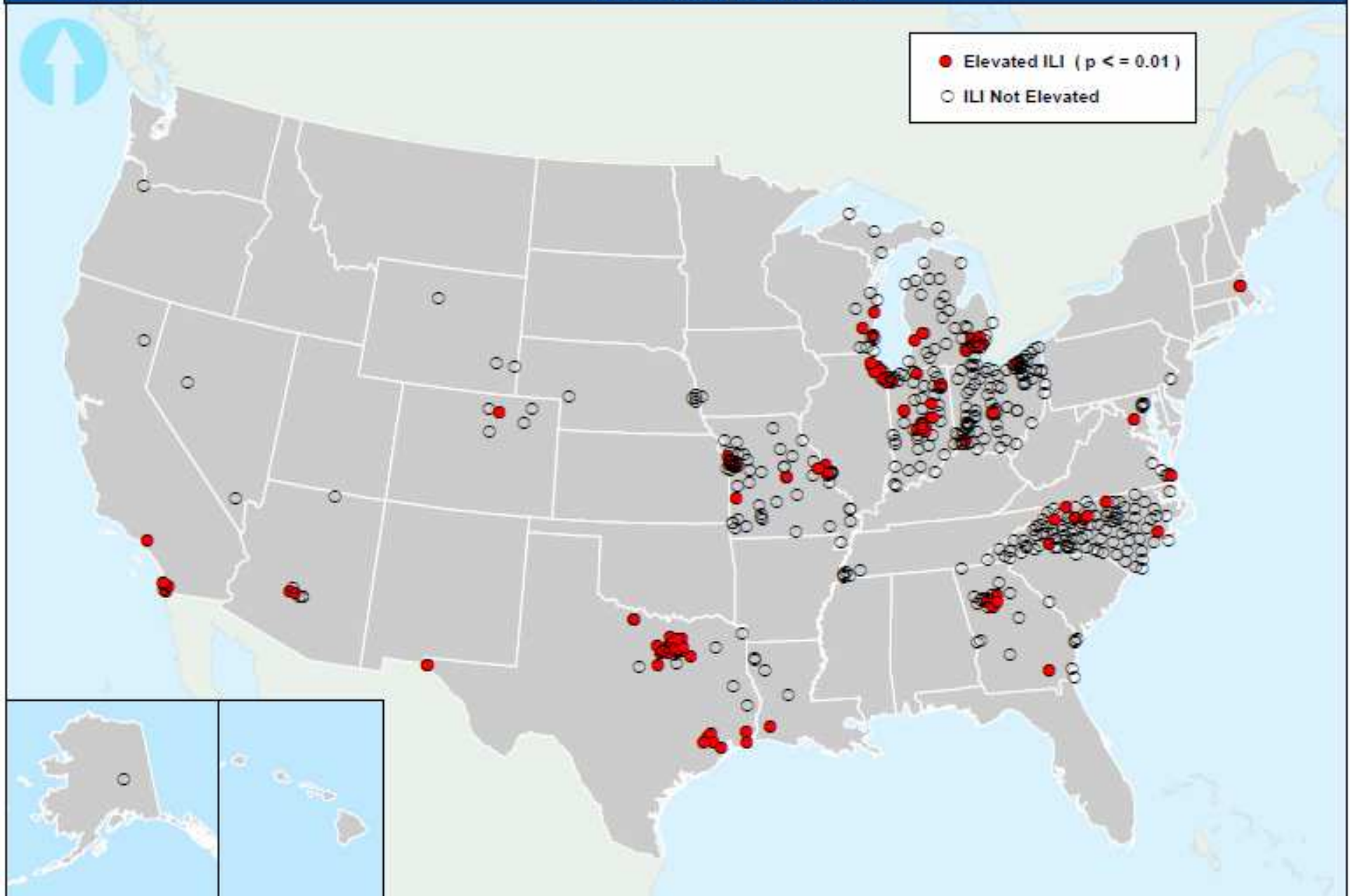
† There was no week 53 during the 2006-07 and 2007-08 seasons, therefore the week 53 data point for those seasons is an average of weeks 52 and 1.

-Internal Use Only (FIUO)---For Official Use Only (FOUO) -

**NOT FOR FURTHER DISTRIBUTION** -Sensitive But Unclassified (SBU) – Novel Influenza A (H1N1) – **NOT FOR FURTHER DISTRIBUTION**



**Influenza-like Illness (ILI) from BioSense Emergency Department Self-Reported Chief Complaints  
Analyzed by the Early Aberration Reporting System (EARS) C2  
Week Ending May 9, 2009**





**International  
Novel Influenza A (H1N1) - 12 May 2009 1100 EDT**



**WHO global case count: 5,251 confirmed cases in 30 countries\***

- No new countries with confirmed cases**
- Countries with highest confirmed case count after the US and Mexico:**
  - Canada: 330 Cases (↑46) Spain: 95 (=) UK: 55 (↑8)**
- Panama case count now 16 (↑14)**

**ECDC reporting confirmed cases in 14 EU countries**



**Division of Global Migration and Quarantine  
Novel Influenza A (H1N1) - 12 May 2009 1100 EDT**



- **Ports of Entry (POEs)**
  - 160 events, 16 confirmed cases
  - Maritime – 2 ILI cases among crew identified on Royal Caribbean ship – Vancouver/Alaska/San Francisco.
    - Ship to be boarded May 12 by 2 Quarantine Officers in Sitka, AK.
- **Community Mitigation (CM)**
  - Mexico Community Mitigation revised protocol sent to CDC for Clearance



## Communications Summary Novel Influenza A (H1N1) - 12 May 2009 1100 EDT



### Communicating to Prevent Stigma

#### CDC Resources for Partners:

- “Countering Stigmatization” CDC Podcast (4,794 downloads)
- **Avoiding Stigmatization of Migrant Farmworkers**
  - Sent to 1,250 State/local health communication and PIO
  - Referrals to *Stigma: Its Harm and Remedy in Outbreaks Like Swine Flu* (Center for Biosecurity UPMC)

#### Perform communication surveillance to discern public stigmatizing perceptions

- Not a major theme of calls or news stories
- Association of illness with travel to Mexico, rather than with Mexican people